

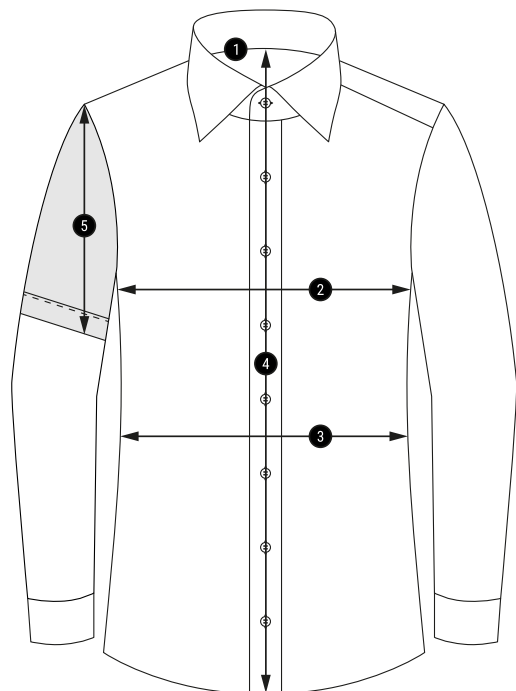


# seidensticker

Camisas de negocios

## Tabla de medidas estándar

standard measurement chart



| 1             | Tallas   |               |           |            |            |            |            |        |        |         |        |        |  |
|---------------|--|---------------|-----------|------------|------------|------------|------------|--------|--------|---------|--------|--------|--|
|               | Tallas de cuello                                       | cm            | XS        | S          | M          | L          | XL         | XXL    | 3XL    | 4XL     | 5XL    | 6XL    |  |
|               | collar sizes   | inch          | 36        | 37/38      | 39/40      | 41/42      | 43/44      | 45/46  | 47/48  | 49/50   | 51/52  | 53/54  |  |
|               |  |               | 14        | 14½/15     | 15½/15¾    | 16/16½     | 17/17½     | 17¾/18 | 18½/19 | 19¾/19½ | 20/20½ | 21/21½ |  |
| 2             | Busto<br>chest measurement                             | comfort fit   |           |            | 120        | 128        | 136        | 146    | 150    | 156     | 160    | 164    |  |
|               |  | regular fit   |           | 110        | 116        | 124        | 132        | 140    | 150    | 156     | 160    | 164    |  |
|               |  | shaped fit    |           | 108        | 114        | 122        | 128        | 134    |        |         |        |        |  |
|               |  | slim fit      | 96        | 104        | 112        | 118        | 126        | 134    |        |         |        |        |  |
|               |  | <b>x-slim</b> | <b>94</b> | <b>102</b> | <b>110</b> | <b>118</b> | <b>126</b> |        |        |         |        |        |  |
| 3             | Tamaño de la cintura<br>waist measurement              | comfort fit   |           |            | 114        | 124        | 134        | 146    | 154    | 162     | 168    | 172    |  |
|               |  | regular fit   |           | 100        | 108        | 116        | 126        | 134    | 146    | 156     | 164    | 170    |  |
|               |  | shaped fit    |           | 94         | 102        | 108        | 114        | 120    |        |         |        |        |  |
|               |  | slim fit      | 82        | 90         | 98         | 104        | 112        | 120    |        |         |        |        |  |
|               |  | <b>x-slim</b> | <b>78</b> | <b>86</b>  | <b>94</b>  | <b>102</b> | <b>110</b> |        |        |         |        |        |  |
| 4             | Longitud del casco para LM 65<br>body length for SL 65 | comfort fit   |           |            | 82         | 82         | 85         | 90     | 90     | 90      | 90     | 90     |  |
|               |  | regular fit   |           | 82         | 82         | 82         | 85         | 85     | 90     | 90      | 90     | 90     |  |
|               |  | shaped fit    |           | 79         | 80         | 81         | 82         | 83     |        |         |        |        |  |
|               | Longitud del casco para LM 67<br>body length for SL 67 | slim fit      | 76        | 77         | 78         | 79         | 80         | 81     |        |         |        |        |  |
|               |  | <b>x-slim</b> | <b>80</b> | <b>81</b>  | <b>82</b>  | <b>83</b>  | <b>85</b>  |        |        |         |        |        |  |
|               |  | comfort fit   |           |            | 87         | 87         | 90         | 95     | 95     | 95      | 95     | 95     |  |
|               | Longitud del casco para LM 70<br>body length for SL 70 | regular fit   |           | 87         | 87         | 87         | 90         | 90     | 95     | 95      | 95     | 95     |  |
|               |  | shaped fit    |           | 82         | 83         | 84         | 85         | 86     |        |         |        |        |  |
|               |  | slim fit      | 81        | 82         | 83         | 84         | 85         | 86     |        |         |        |        |  |
| <b>x-slim</b> | <b>80</b>  | <b>81</b>     | <b>82</b> | <b>83</b>  | <b>85</b>  |            |            |        |        |         |        |        |  |
| 5             | Manga corta<br>short sleeve                            | comfort fit   |           |            | 28         | 28         | 28         | 28     | 28     | 28      | 28     | 28     |  |
|               |  | regular fit   |           | 26         | 26         | 26         | 26         | 26     | 28     | 28      | 28     | 28     |  |
|               |  | shaped fit    |           | 25         | 25         | 25         | 25         | 25     |        |         |        |        |  |
|               |  | slim fit      | 23        | 23         | 23         | 23         | 23         | 23     |        |         |        |        |  |
|               |  | <b>x-slim</b> | <b>23</b> | <b>23</b>  | <b>23</b>  | <b>23</b>  | <b>23</b>  |        |        |         |        |        |  |